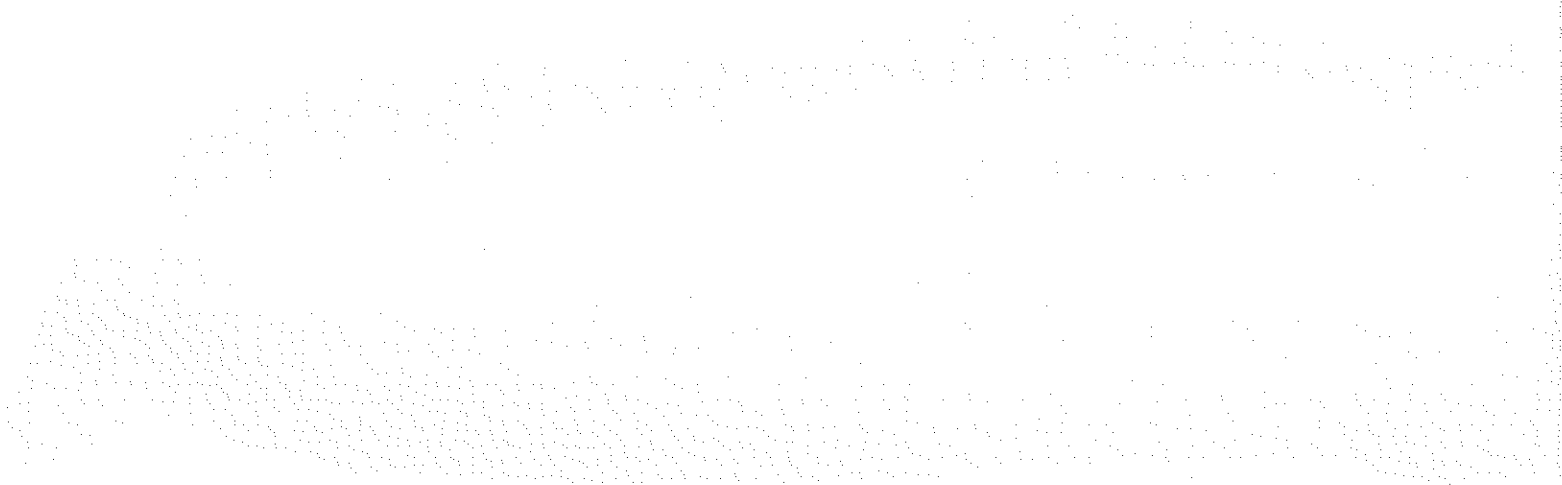
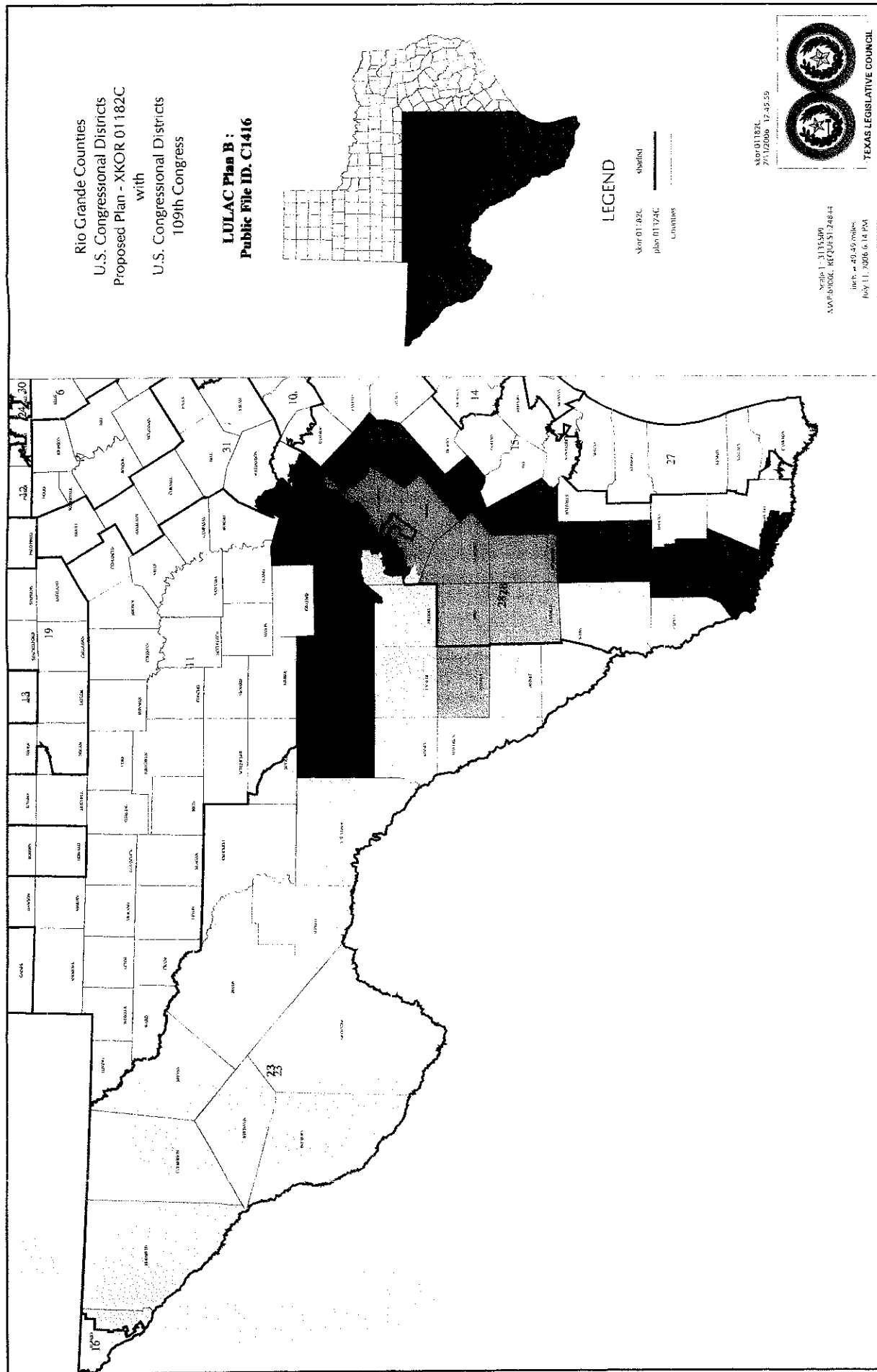
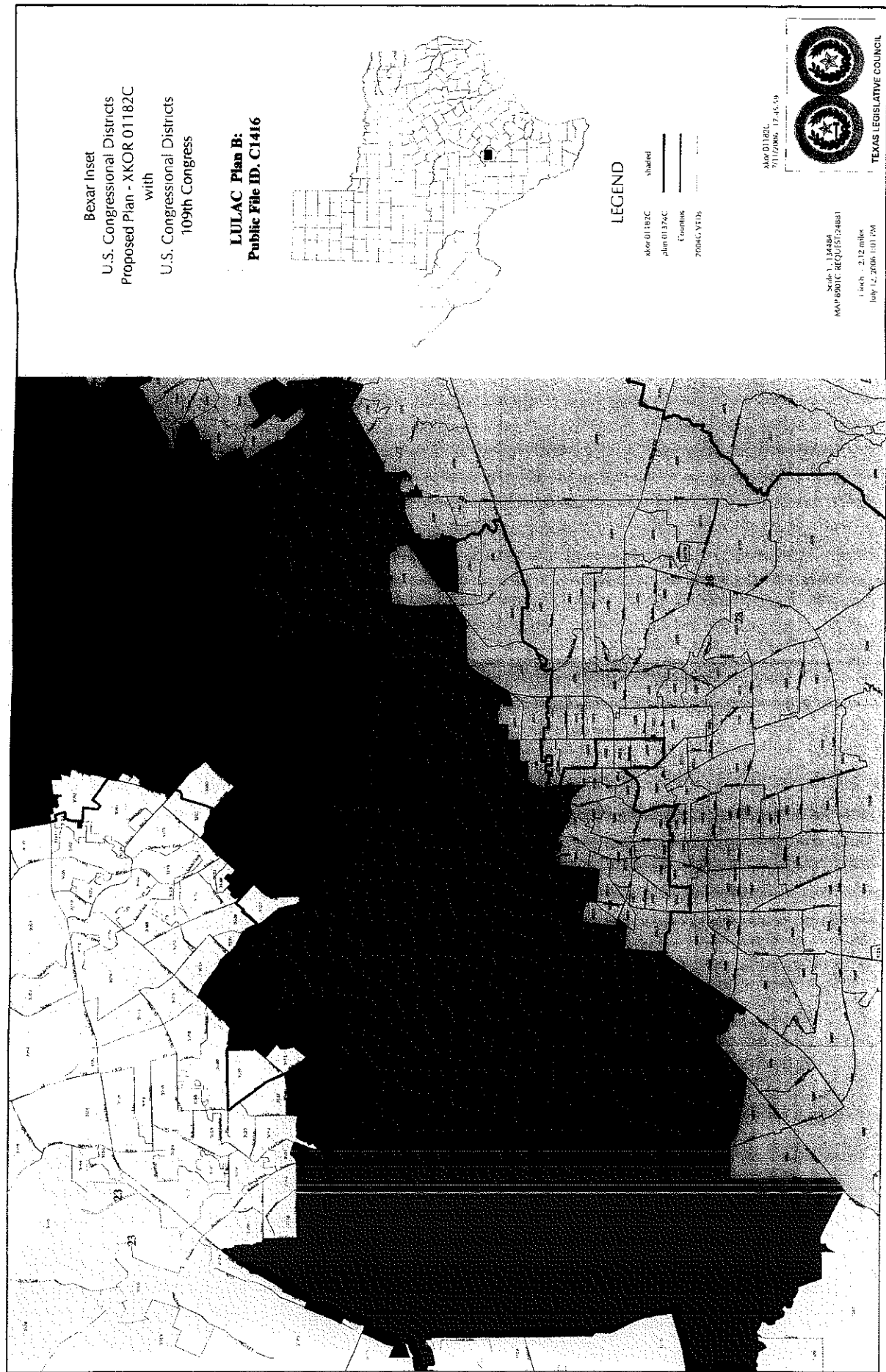


B







LULAC Plan B:
Public File ID: C1416

RED-M200
Data: 2000 Census
PLAN 01416C 07/12/06 12:07:17

POPULATION AND GENERAL ELECTION HISTORY
CONGRESSIONAL DISTRICTS - PLAN 01416C

Texas Legislative Council
07/12/06 12:11 PM
Page 1 of 1

| PLAN 01416C DIST | 2000 CENSUS | | | | TOTAL POPULATION | | | % POPULATION | | | -YEAR- | GENERAL REG | | GENERAL ELECTION HISTORY* | | STATEWIDES** | | | |
|---------------------|--------------------|--------------------|--------------------|------------------|--------------------|--------------------|------------------|--------------|------------|--------------|--------------|-------------|--------------|---------------------------|--------------|--------------------|----------------|--------------|--------------|
| | DEVIATION | TOTAL | ANGLO | BLACK | HISP | B+H | OTHER | %A | %B | %H | | %B+H | %O | TOTAL | %SPAN | TOTAL | TO/VR | %DEM | %REP |
| 20 Total VAP | -3,011 (-0.46%) | 648,608 468,571 | 186,315 152,844 | 50,231 33,850 | 396,890 269,136 | 443,302 301,245 | 18,991 14,482 | 28.7 32.6 | 7.7 7.2 | 61.2 57.4 | 68.3 64.3 | 2.9 3.1 | 2004 2002 | 323,451 310,600 | 54.2 53.4 | 191,566 109,911 | 59.2% 35.4% | 54.2 55.5 | 45.8 44.5 |
| 21 Total VAP | +3,418 (+0.52%) | 655,037 496,593 | 492,478 384,306 | 20,141 13,584 | 115,364 77,527 | 134,222 90,525 | 28,337 21,762 | 75.2 77.4 | 7.1 2.7 | 17.6 15.6 | 20.5 18.2 | 4.3 4.4 | 2004 2002 | 463,803 411,425 | 12.4 12.0 | 364,809 222,240 | 78.7% 54.0% | 38.1 34.6 | 61.9 65.4 |
| 23 Total VAP | +1,994 (+0.31%) | 653,613 445,398 | 194,692 149,537 | 11,250 7,699 | 436,933 280,135 | 446,389 286,931 | 12,532 8,930 | 29.8 33.6 | 1.7 1.7 | 66.8 62.9 | 68.3 64.4 | 1.9 2.0 | 2004 2002 | 363,741 337,576 | 54.4 55.3 | 222,169 151,833 | 61.1% 45.0% | 43.8 52.6 | 56.2 47.4 |
| 25 Total VAP | 0 (0.00%) | 651,619 454,116 | 142,883 121,040 | 52,092 36,414 | 447,059 287,855 | 496,382 322,807 | 13,354 10,269 | 21.9 26.7 | 8.0 8.0 | 68.6 63.4 | 76.2 71.1 | 1.9 2.3 | 2004 2002 | 294,404 277,408 | 56.1 55.6 | 164,853 103,840 | 56.0% 37.4% | 66.3 69.8 | 33.7 30.2 |
| 28 Total VAP | -2,399 (-0.37%) | 649,220 452,961 | 204,011 160,109 | 51,756 33,715 | 385,793 250,789 | 434,809 285,261 | 10,400 7,591 | 31.4 33.3 | 8.0 7.9 | 59.4 55.4 | 67.0 63.0 | 1.6 1.7 | 2004 2002 | 352,451 336,866 | 50.1 50.3 | 199,423 117,669 | 56.6% 34.9% | 51.4 55.4 | 48.6 44.6 |

* Texas Legislative Council reports generally do not include results from third party, independent, or write-in candidates. Complete official results are maintained by the office of the secretary of state.
** "Statewides" is a weighted average of the results of all general election statewide contested contests.